

Specifications of DocuPrint C2200

Print Functions		
Print Speed	Simplex	Up to 25 ppm colour and black & white (A4)
	Duplex*	Up to 17 ipm colour and black & white (A4)
Print Resolution	600 × 600 dpi (multi-level)	
First-Page-Out Time	Less than 17 seconds (colour) / 14 seconds (black & white)	
Warm-up Time	Less than 30 seconds	
Memory (std/max)	256 MB/768 MB (256 MB + 512 MB)	
Processor	400 MHz	
PDL	PCL6, PCL5e, HBPCL (for scanner), FX-PDF, XPS, Adobe® PostScript® 3™	
Hard Disk (optional)	40 GB	
Connectivity	USB 2.0, Ethernet 10/100Base-TX	
Operating System	Windows® 2000/XP (32 / 64-bit) / Vista® (32 / 64-bit) / Server® 2003 (32 / 64-bit) / Server® 2008 (32 / 64-bit), Mac OS X (10.3 - 10.5), Red Hat® Enterprise Linux® WS v4, SUSE® Linux® 10.0, Citrix XenApp™, SAP® R/3®	
Input Paper Size	Bypass Tray: A4, B5, A5, Legal (8.5 × 14"), Folio (8.5 × 13"), Letter (8.5 × 11"), Executive (7.25 × 10.5"), envelopes (Monarch, Com 10, DL, C5), Custom (width 76.2 to 220.0 mm, length 98.4 to 355.6 mm) Paper Tray: A4, B5, A5, Legal (8.5 × 14"), Folio (8.5 × 13"), Letter (8.5 × 11"), Executive (7.25 × 10.5"), Custom (width 148.0 to 215.9 mm, length 210.0 to 355.6 mm)	
Input Paper Weight	Bypass Tray: Lightweight: 60 gsm; Heavyweight: 216 gsm Paper Tray: Lightweight: 60 gsm; Heavyweight: 216 gsm	
Media Input Capacity†	Standard	Paper tray: 250 sheets, Bypass tray: 150 sheets
	Optional	550-sheet feeder: 550 sheets
Media Output Capacity†	250 sheets (A4) face down	
Dimensions (W x D x H)	400 × 507 × 473 mm	
Weight	24.4 kg	
Power Supply	220 - 240 VAC, 50/60 Hz, 5 A (AP/Korea/China)	
Power Consumption	Maximum: 900 W; Printing: 420 W; Standby: 95 W, Sleep: 9 W or less (220-240 V), 7 W or less (110 V)	
Environment	Temperature: 10 °C - 32 °C (when printing), Humidity: 15 % - 85 % (when printing)	
Noise Levels	Standby mode: Less than 4.0 B Printing mode: Less than 6.9 B (7.4 B**)	
Warranty	Please check with your Fuji Xerox Printers reseller for more information.	

* Requires optional duplex unit.
† Based on 64 gsm plain paper.
** When using optional memory, hard disk unit, duplex unit and 550 sheet feeder.



Descriptions in this material, product specifications and/or appearance are subject to change without prior notice due to improvements. Please note that the product colour appears differently from the actual colour as a result of properties of papers or printing ink. Windows and Windows NT are registered trademarks of Microsoft Corporation. NetWare is a registered trademark of Novell, Inc. in the United States. Mac OS and iMac are trademarks of Apple Computer, Inc. PostScript is a registered trademark of Adobe Systems, Incorporated in each country. HP GL is a registered trademark of Hewlett-Packard Company. IBMLink is a trademark of the Japan Business Machine and Information System Industries Association (JBMA). Other company names or product names are registered trademarks or trademarks of each company.

Consumables		
Black (up to 6,000 pages*)		CT350670
Cyan (up to 4,000 pages*)		CT350671
Magenta (up to 4,000 pages*)		CT350672
Yellow (up to 4,000 pages*)		CT350673
Black (up to 9,000 pages*)		CT350674
Cyan (up to 9,000 pages*)		CT350675
Magenta (up to 9,000 pages*)		CT350676
Yellow (up to 9,000 pages*)		CT350677
Periodic Replacement Items	Fuser Unit* 220 V (up to 100,000 pages†)	EL300729
	Belt Unit (up to 100,000 pages†)	EL300727

* Average standard pages. Declared yield in accordance with ISO/IEC 19752. Yield will vary depending on image area, coverage and print mode. Printer is shipped with one starter print cartridge with an average yield of 6,000 pages for black and 4,000 pages for cyan, magenta and yellow.
† Includes three feed rollers in the standard tray and three feed rollers in the optional tray.
** Declared yield based on an average job size of three letter- or A4-size pages. Yield will vary based on job length, media size, media type and orientation.

Accessories (optional)		
550 sheet Feeder	A4, B5, A5, 148.5 × 210.0 to 215.9 × 355.6 mm Light: 60 gsm; Heavy: 216 gsm	EL300629
Duplex Unit	A4, B5, A5, Legal (8.5 × 14"), Folio (8.5 × 13"), Letter (8.5 × 11"), Executive (7.25 × 10.5"), 148.5 × 210.0 to 215.9 × 355.6 mm Lightweight: 60 gsm; Heavyweight: 163 gsm	EL300630
Hard Disk (40 GB)		EL300730
512 MB Memory		EL300633

•**Reproduction Prohibitions** Please note that reproduction of the following is prohibited by law:
Domestic and overseas bank notes and coins, government issued securities, national bonds and local bond certificates, Unstamped postage stamps and post cards, Certificate stamps stipulated by law. The reproduction of works for copyright purposes (literary works, musical works, paintings, engravings, maps, cinematographic works, photographic works, etc.) is prohibited except when they are reproduced personally, at home or within limited range according to the above. This product is equipped with an anti-counterfeit feature. This feature is not intended to prevent illegal reproduction. Be extremely careful about the management of equipment used.

For Your Safe Use
Before using the product, read the Instruction Manual carefully for proper use.
Use the product with an appropriate adequate power source and voltage displayed. Be sure to establish a ground.
In the case of a failure or short circuit, an electric shock may result.

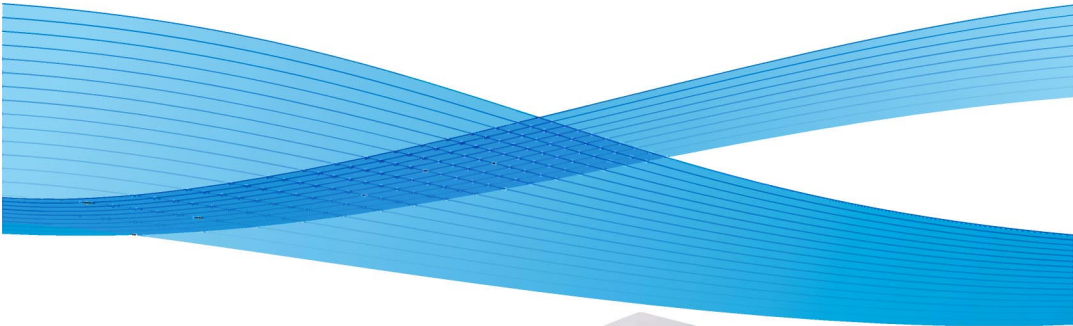
DocuPrint
C2200



DocuPrint C2200

Colour Printer

Fast, affordable, business-class colour



For more information or detailed product specifications, call or visit us at:

Fuji Xerox Asia Pacific Pte. Ltd. (993478-A)
(Fuji Xerox Printers)
Wisma Fuji Xerox,
1st Floor, No. 10, Jalan Bersatu 13/4,
46200 Petaling Jaya,
Selangor, Malaysia.
Tel: 03-7882 2888 Fax: 03-7882 2767

Service Hotline : 1800 88 1063
www.fujixeroxprinters.com.my

* XEROX and the sphere of connectivity design are trademarks or registered trademarks of Xerox Corporation.



A colour laser with all the right features.

Fleet performance, network ready, and very affordable. The compact, hardworking DocuPrint C2200 delivers uncompromising quality and a full-range of office-friendly features ideal for busy workgroups.



Fits your office and budget

Maximize office productivity with minimum overhead. The DocuPrint C2200 proves that efficiency need not be expensive, offering a variety of big-printer advantages seldom found on other printers in its class.

- **Fast, trouble-free installation** gets you up and running without time-consuming and expensive support calls.
- **Economical, high-yield toner cartridges** reduce per page cost and minimize down time for replacement.
- **A low energy consumption rating** makes the DocuPrint C2200 as green as it is economical.
- **Administration tools** provide intuitive, browser-based configuration of printer and user settings.

Crisp, professional-looking documents

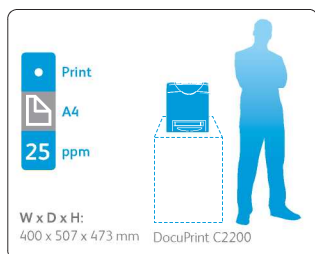
High-resolution and superior colour combine to give your documents a polished look. Photos come to life with breathtaking clarity, while charts and graphs command special attention — a nice touch for the office that wants to look its best.

- **Razor-sharp printing** at 9600 x 600 dpi produces crystal-clear text, photos, and graphics. Even small text and super-fine lines display exceptional sharpness.
- **Rich, vibrant colour** is yours thanks to Fuji Xerox's unique EA-HG toner. The small, uniformly shaped toner particles deliver breathtaking results.
- **Compatibility with Adobe® PostScript® 3™ and PCL6** lets you choose the right driver for the application, giving you increased control over print operations.

Performance-based functionality

Designed to satisfy the demanding needs of busy workgroups, the DocuPrint C2200 has the power for any office. Whatever the task, outstanding speed and responsiveness keep your office humming at peak productivity.

- **Lightning-quick 25 ppm output** and a fast, full-colour first-page-out-time of less than 17 seconds reduce wait times and eliminate bottlenecks at the printer.
- **A 400 MHz processor and 256 MB RAM** (expandable to 768 MB) make short work of even complex, graphics-heavy documents.
- **Optional duplex print unit and 550-sheet feeder** vastly expand output capabilities — excellent additions for printing long documents and decreasing printer downtime when the paper runs out.



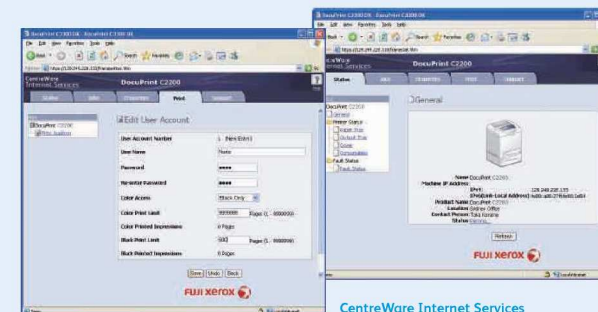
Effortless maintenance and administration

The DocuPrint C2200 is a joy for users and administrators alike. Replacing consumables is fast and straightforward while printer and user administration is point-and-click simple.



Easy front access

Consumables such as toner, fuser, and belt unit are all located under the top cover and easily accessed from the front. This intelligent design also reduces the space needed for installation.



Fuji Xerox Auditron

Keep track of printer usage and set user limits with this comprehensive set of management tools for network administrators.

CentreWare Internet Services

Simplify installation and configuration as well as obtain up-to-the-minute status reports with this browser-based software. Automatic e-mail alerts notify administrators or users of events that require attention, like low toner levels.

Comprehensive networking

Versatile connectivity and a host of privacy features make the DocuPrint C2200 the wise choice for today's complex, security conscious environments.

- **Multiple interfaces** allow connection to your existing office LAN via 100Base-TX/10Base-T or directly to a computer via USB 2.0.
- **Solid security features** provide everything you need to protect confidential data — both over office LANs and the Internet. Tools include IPv6+IPSec, IEEE802.1X authentication*, and SNMPv3 (for TCP/IP).
- **Multi-platform compatibility** extends not only to Windows and Macintosh networks but also various versions of Linux.
- **Full-featured, Citrix XenApp™ and SAP R/3®** enterprise printing solutions can be easily rolled out using ApeosWare Device Type.

* Requires the optional hard disk.



Environmentally conscious

Fuji Xerox shares your concern for the earth, and strives to minimize the environmental impact of all our activities. Our environmental responsibility covers the entire life of the DocuPrint C2200, from manufacturing and operation, to production and recycling of consumables.

Oil-free and reduced CO₂ emissions

EA-HG toner used in the DocuPrint C2200 does not contain oil, helping to conserve this precious resource. Additionally, the amount of CO₂ emitted during manufacturing is reduced up to 35%, further decreasing environmental burden.

Power saving operation

The DocuPrint C2200 consumes only 7 W* of electricity per hour during sleep mode and has a highly efficient TEC (typical electricity consumption) of 2.351 kWh per week.

* For the 110-volt version: 9 W for the 220-volt version.

Forest-friendly

Packaging for high-capacity (9,000-page) toner cartridges consumes 20% less paper than packaging for low-capacity cartridges used by some of our competitors. Like Fuji Xerox printing paper, this forest-friendly packaging utilizes recycled paper.

Certified energy efficient

The DocuPrint C2200 carries International Energy Star certification. Energy Star is a voluntary labelling program designed to identify and promote energy-efficient products to reduce greenhouse gas emissions.

