



Supplies

Consumables

Cyan (up to 15,000 pages)	CT200857
Magenta (up to 15,000 pages)	CT200858
Yellow (up to 15,000 pages)	CT200859
Black (up to 26,000 pages)	CT200856

Additional Supplies

Drum Cartridge (up to 30,000 pages)	CT350462
Toner Waste Box (up to 25,000 pages)	CWAA0686
Staple Pack (5,000 staples)	CWAA0690
Staple for Booklet (5,000 staples x 4 sets)	CWAA0691
Approximate capacity for 5% coverage on A4 size paper	

Accessories

550-sheet Feeder (One 500-sheet cassette and cabinet)	EC100641
1,650-sheet Feeder (Three 500-sheet cassettes)	EC100642
High-Capacity Feeder (One 550-sheet cassette, one 980-sheet cassette, and one 1,280-sheet cassette)	EC100643
Cabinet	EC100644
Internal Hard Disk (40 GB)*	EC100645
256 MB Memory	EC100646
512 MB Memory	EC100647
Side Tray	EC100648
Banner Support Tray	EC100651
Professional Finisher*	EC100652

* Requires 384 MB memory

* The optional hard disk drive is necessary. If this finisher is mounted, long-size printing is disabled.

CONFIGURATIONS	DocuPrint C4350
Performance	
Print speed	35 ppm colour and 45 ppm monochrome
Print speed duplex	28 ppm colour and 36 ppm monochrome
First page out	9.7 sec. colour and 6.9 sec. monochrome
Warm up time	45 sec. from power on
Memory (std./max.)	256/768 MB RAM
Processor	PowerPC G3 600 MHz
PDL (Page Description Language)	PCL 6, PCL 5, PCL 5C, HP-GL, HP-GL2, Adobe PostScript 3, ESC/P, TIFF, and FXPDF
Internal hard disk drive	40 GB (optional)
Maximum monthly duty cycle	Up to 150,000 pages
Print Quality	
Print resolution	300 x 300 dpi, 600 x 600 dpi, 1200 x 1200 dpi ¹
Networking	
Network connectivity	Ethernet 10/100Base-TX, IEEE1284 parallel, USB1.1 and USB2.0
Paper Handling	
Automatic 2-sided printing	Standard
Paper input capability	Standard mode: 550-sheet cassette, 100-sheet bypass tray (650 sheets ² /590 sheets ³) Standard + 550-sheet feeder (one 550-sheet cassette and cabinet) (1,200 sheets ² /1,090 sheets ³) Standard + 1,650-sheet feeder (three 550-sheet cassettes) (2,300 sheets ² /2,090 sheets ³) Standard + high capacity feeder (3,460 sheets ² /3,110 sheets ³)
Paper output capability	400-sheet standard tray face down (optional 2,000-sheet Professional Finisher ⁴ face down and 200-sheet side tray face up)
Productivity	
Standard features	Banner printing, PDF direct print, poster and stamp (watermark) printing, e-mail printing, IP address restriction, control panel restriction and ID printing, CentreWare® utilities
Warranty	One year on-site warranty

SPECIFICATIONS

Network/Software

Printer management CentreWare IS Embedded Web Server (EWS).

Font capabilities 81 standard European fonts, 136 optional European fonts (PS), 1 optional Chinese font, 2 Japanese fonts (Heisei)

Printer drivers Windows 95/98/Me/NT 4.0/2000/XP/Server 2003, Mac OS 7.5.3, 8.x, 9.x, or later, Mac OS X 10.2.x or 10.3.x

Languages PCL 6, PCL 5, PCL 5C, HP-GL, HP-GL2, Adobe PostScript 3, ESC/P, TIFF, and FXPDF

Paper Handling

Trays 1 to 4: Plain (64 to 98 gsm), Lightweight (55 to 63 gsm), Heavyweight 1 (99 to 169 gsm), Heavyweight 2 (170 to 220 gsm), Coated 1 (99 to 169 gsm), Coated 2 (170 to 220 gsm), Transparency (colour/monochrome)
Bypass tray: Plain (64 to 98 gsm), Lightweight (55 to 63 gsm), Heavyweight 1 (99 to 169 gsm), Heavyweight 2 (170 to 220 gsm), Coated 1 (99 to 169 gsm), Coated 2 (170 to 220 gsm), Label (99 to 169 gsm), Transparency (colour/monochrome), Postcard

Media sizes

Trays 1 to 4 (Standard tray, Tray 2 to 4 in 1,650-sheet Feeder, and Tray 2 in High-Capacity Feeder): A5, A4, A4, A3, B4, B5, 8.5 x 11", 8.5 x 11", 8.5 x 13", 8.5 x 14", 11 x 17", 8 x 10", 5.5 x 8.5", 8-kai, 16-kai
Non-standard: Short edge: 148 to 297 mm, Long edge: 210 to 431.8 mm
Trays 3 and 4 (High-Capacity Feeder): A4, 8.5 x 11", B5
Bypass Tray: Postcard to 12 x 19", Non-standard: Short edge: 100 to 305 mm, Long edge: 100 to 431.8 mm (Long-size: 431.9 to 1200 mm)
Duplex print: A3, B4, A4, B5, A5, 11 x 17", 8.5 x 14", 8.5 x 13", 8.5 x 11", 8 x 10", 5.5 x 8.5", Custom size 140-297 mm (W) x 148-432mm (L)

Special features

Productivity Tools

Secure print, energy save mode, booklet printing⁴, watermarks, banner printing, PDF direct print, sample/security/form overlay printing², IP address restriction, control panel restriction and ID printing.

Colour controls

Selectable print quality modes Standard: 300 x 300 dpi; High Quality: 600 x 600 dpi; High Resolution: 1200 x 1200 dpi
Colour correction modes Image auto correction (standard), Portrait, Landscape, Map, JapanColour 2001, SWOP, Euro Sheet-fed, None
Image types Standard, Photo, Presentation, Web pages, CAD, POP

General Specifications

Dimensions: 632 mm (W) x 493 mm (H) x 717 mm (D)
Weight: 91 kg.

Operating

Environment: Temperature: 10 to 32°C, Relative Humidity: 15 to 85% (no condensation) Humidity should be 47.5% or below at 32°C, and temperature should be 27.8°C or below at 85% humidity.
Noise level: Standby mode 4.9B, 32dB (A) or less; Operating mode: 7.0B, 53dB (A) or less
Electrical: 220-240 VAC, 50/60 Hz, Consumption: 250 W (avg.), 1,620 W (max.)
Energy save mode: 8 W, Energy Star certified printer.

Customer Support

One-year on-site warranty, online web technical support, and telephone support. Innovative service offerings include optional extended Service Agreements and custom training for your internal Help Desk.

Warranty varies by location. For details please check with your local Fuji Xerox Printers office (AUS: 1800 811 177, NZ: 0800 449 177) or online at www.fxprinters.com.

The Power To Be More Than A Printer

A complete in-house printing and finishing solution.



FXprinters.com



Fuji Xerox Printers

©2005 Fuji Xerox Printers. All rights reserved. Contents of this publication may not be reproduced without permission of Fuji Xerox Printers. Xerox, The Document Company, the stylised X, Phaser, CentreWare® and PhaserSmart® are registered trademarks/trademarks of Xerox Corporation. All other names mentioned are trademarks of their respective companies. The information in this brochure is subject to change without notice. Errors and omissions excepted. Fuji Xerox Printers practice a policy of continued product development, this means that product specifications may incorporate innovations and/or enhancements resulting from ongoing research & development (and may vary from those specified in brochures at time of printing). In keeping with normally accepted commercial practices, the purchaser is advised to both confirm product specifications, and satisfy themselves as to product performance and exact configuration (to suit each particular requirement) before purchase. Fuji Xerox Printers will not accept any liability (product related and/or resulting from product usage) where such due diligence has not been performed and the incorrect product has been purchased.



DocuPrint C4350

Colour Laser Printer



Powerful enough for any job.
Competitively priced.
Configurations for any office.

Busy workgroups and demanding graphics and creative businesses require fast dependable performance and quality results. The DocuPrint C4350 delivers both and more. Its competitive price and low cost-per-page contradicts the power and quality that only Fuji Xerox can deliver. Feature-packed and easily scalable, the DocuPrint C4350 expands your printing horizons, producing professional results that truly dazzle.



Speed, Power, and Quality

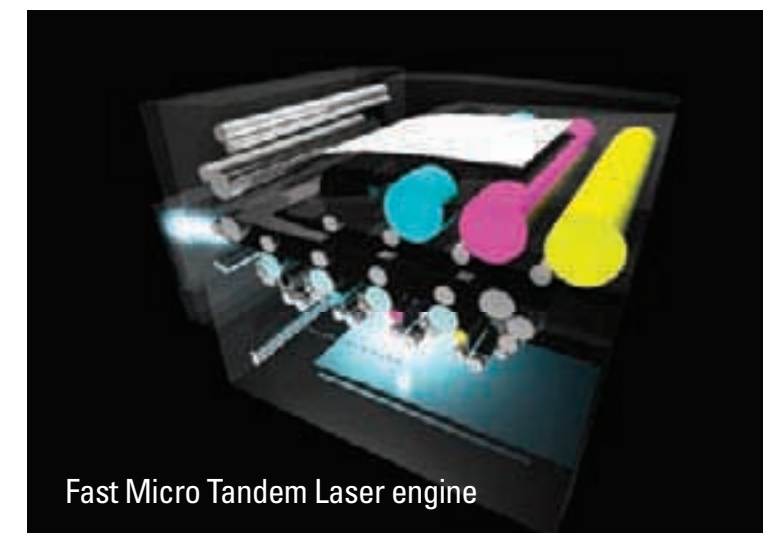
- 35 ppm (A4) colour output
- 45 ppm (A4) mono output
- 600 MHz Power PC G3 processor
- 768 MB RAM (max)
- 3,460-sheet paper capacity (max)
- Real 1,200 x 1,200 dpi
- Fuji Xerox EA-HG toner

WAN/LAN Networking

- Internet Printing Protocol (IPP) support
- Citrix® Metaframe® support
- 100Base-TX/10Base-T interface

Great Expandability

- Professional finisher
- Multiple paper cassettes
- Optional RAM
- Optional internal hard disk



Fast Micro Tandem Laser engine

Easy Management and Maintenance

- Embedded CentreWare® utilities
- Front access to consumables
- 150,000-page monthly duty cycle
- Long-life components



Printing Features for Any Job

- Booklet printing*
- Banner printing
- Transparency separator
- Form overlay printing
- Watermark printing
- Sample print*
- Multiple-up printing
- Folding†
- Stapling†
- Hole punching†

* Requires the optional internal HD
† Requires the optional Professional Finisher





DocuPrint C4350

Colour Laser Printer

More printer than you'll ever need.



A vast array of print features and tools coupled with scalable configurations make the DocuPrint C4350 a printer you can grow into, but one you'll never outgrow. From the basic high-speed, high-quality desktop configuration to floor-standing configurations with multiple paper cassettes and a professional finisher, the DocuPrint C4350 is the right printer for any office.



When quality and speed count

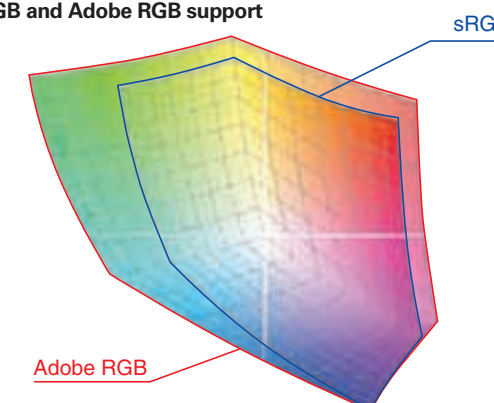
For fast, high-quality printing, rely on the DocuPrint C4350. Real 1,200 x 1,200 dpi resolution guarantees beautiful looking, photo-quality documents in up to 16.7 million colours. Adobe PostScript 3 produces razor-sharp graphics and type for professional looking documents and expands your printing capabilities with such features as Adobe RGB and sRGB colour support, CMYK simulation, and a 'mid-tone only' brightness control.

If it's speed you're after, the DocuPrint C4350 delivers 35 ppm (A4) colour/45 ppm (A4) mono print speeds and first page out times of 9.7 seconds colour and 6.9 seconds mono. Duplex printing is also lightning fast at up to 28 ppm (A4) colour/36 ppm (A4) mono.

CMYK Colour Correction

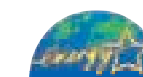


sRGB and Adobe RGB support



Easy to maintain and easy on the environment

Changing consumables is quick and clean thanks to the user-friendly design that allows access from the front of the printer. A robust monthly duty cycle of 150,000 pages and long-life components mean less down-time due to decreased maintenance needs. Additionally, the DocuPrint C4350 consumes a mere 8W in energy save mode and carries Energy Star certification.



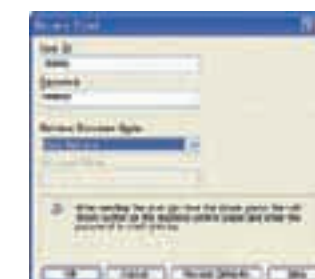
Multi-tasking and reliable performance for any office

A host of standard print features and a variety of optional items make the DocuPrint C4350 ideal for professional or corporate use. Built-in Fuji Xerox reliability means years of trouble-free use in even the most demanding work environments including:

- Medium to large corporate workgroups
- In-house printing and graphics departments
- Digital print shops

Secure printing and simplified administration

Built-in security features ensure that sensitive data is never compromised. SSL encrypts communication via HTTP between PCs and the printer, a secure print function with password initiates printing of confidential documents from the control panel, and hard disk overwrite/delete completely wipes documents from the optional hard disk after printing. For easy administration, embedded CentreWare® Internet Services allows remote management of the DocuPrint C4350, making it easy to configure the printer and check print issues.



The complete network solution

Network connectivity is handled via the built-in 100Base-TX/10Base-T interface. There are also built-in USB 1.1, USB 2.0, and Parallel interfaces for local connections. Multi-platform capability allows you to print from both Windows and Macintosh computers. The DocuPrint C4350 supports Internet Printing Protocol (IPP), e-mail printing (of both messages and TIFF, JPEG, and PDF attachments), and Citrix® Metaframe®.





DocuPrint C4350

Colour Laser Printer

Optional Configurations for Any Office



Basic model DocuPrint C4350
(550-sheet paper cassette and
100-sheet bypass tray)

650
sheets



Basic model w/Storage Cabinet

650
sheets



Basic model w/550 Sheet Feeder
(one 550-sheet cassette and
cabinet)

1,200
sheets



Basic model w/1,650 Sheet
Feeder (three 550-sheet
cassettes)

2,300
sheets



Basic model w/High Capacity
Feeder (one 550-sheet cassette,
one 980-sheet cassette, and one
1,280-sheet cassette)

3,460
sheets



Maximum system configuration (includes high-capacity feeder and
professional finisher)

3,460
sheets

* When using 64gsm Fuji Xerox paper.

Printer options

Side tray



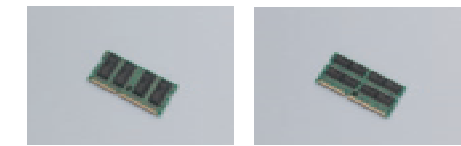
Banner tray



40 GB internal hard disk



256 and 512 MB memory



The professional touch

Give your documents a professional look with the optional Professional Finisher. The unit folds, staples, and punches holes allowing you to bind multi-page documents into presentation-quality reports. The saddle-stitch feature makes this finisher unique from others in its class and is perfect for producing marketing collateral with an offset feel.



Finishing Options

Sort (job offset)
and Collate



Multiposition Stapling
Custom position
and placement to
enhance usability



Hole Punch Options
meet worldwide
conventions



Fold Booklet
Saddle-stitch booklets
in-house to reduce costs
and eliminate delays

